

ROAD INDEX

A	AUBURN ROAD C1-C7 AUBURN LAKES DRIVE A3	J	JACKSON DRIVE A6 JACOBS DRIVE (PVT.) F2	S	SHADOW WOOD CIRCLE A1 SHAW ROAD F4-F6 SIGNAL HILL (PVT.) A3 SNOW ROAD F1-F2 SOUTH BLVD. A6 SOUTH PIN TAIL (PVT.) A3 STAFFORD ROAD A2-E2 SUNSET DRIVE B5-A6
B	BAINBRIDGE ROAD A4 BARTHOLMEW RD. A6-D6 BASS R/JN (PVT.) A3 BRIDGE CREEK TR. C4 BROADWAY DRIVE A6 BROOKFIELD DRIVE A7	K	KASIK DRIVE A6	T	TAYLOR MAY RD. A5-E5 THORPE ROAD B5-B7 TIMBER LN. C3 TWIN CREEKS (PVT.) A3
C	CARRIAGE HILL D3 CHIPPING LANE (PVT.) A3 CLEVELAND DRIVE A6 CLUB LANE (PVT.) A3 COLONIAL COURT A6 CRACKEL ROAD A7-E7 CREEKSIDE DRIVE A4 CREIGHTON DRIVE C3 CURRY LANE C3	L	LAKE DRIVE A6 LONG DRIVE (PVT.) A3 LONGVIEW TRAIL C4 LOST LAKES TRAIL A2 LUCKY BELL LANE A1-A2	U	
E	EAGLES POINTE (PVT.) A3 EDWARD LANE A7	M	MEADOW LANE C3 MESSENGER ROAD E1-D4 MT. PLEASANT DRIVE A6 MUNN ROAD B1-B7	V	VALLEY ROAD F1-E4
F	FAIRWAY VIEW (PVT.) A3 FOX ROAD F6-F7 FRANKS ROAD B1-D1	N	NORTH BLVD. A6 NORTH PIN TAIL (PVT.) A3	W	WASHINGTON STREET A3-E4 WATERFORD TRAIL A6 WHISPER WOOD CIRCLE A1 WIDGEON DRIVE A5-B5 WINWARD WAY (PVT.) A3 WING ROAD C3-C4 WINGATE DRIVE C4 WOOD ACRE TRAIL A3 WOODSONG WAY (PVT.) A3
G	GREENWAY TRAIL A2	O	OVERLOOK BROOK CT (PVT.) A3 OVERLOOK BROOK DR (PVT.) A3	Y	
H	HEATHER HILL (PVT.) A3	P	POINTE BREEZE (PVT.) A3 PRIMROSE COURT A6	Z	
I	INDIAN HILLS DR. A4	Q	QUINN ROAD A5-A6		
		R	RAVENNA ROAD E1-E7 RIVERWOOD LANE A1		

- ① AUBURN ELEM. SCHOOL ④ AUBURN VOL. FIRE DEPT.
 ② AUBURN COMMUNITY CHURCH ⑤ STATE HIGHWAY GARAGE (SUB-STATION)
 ③ AUBURN TOWN HALL

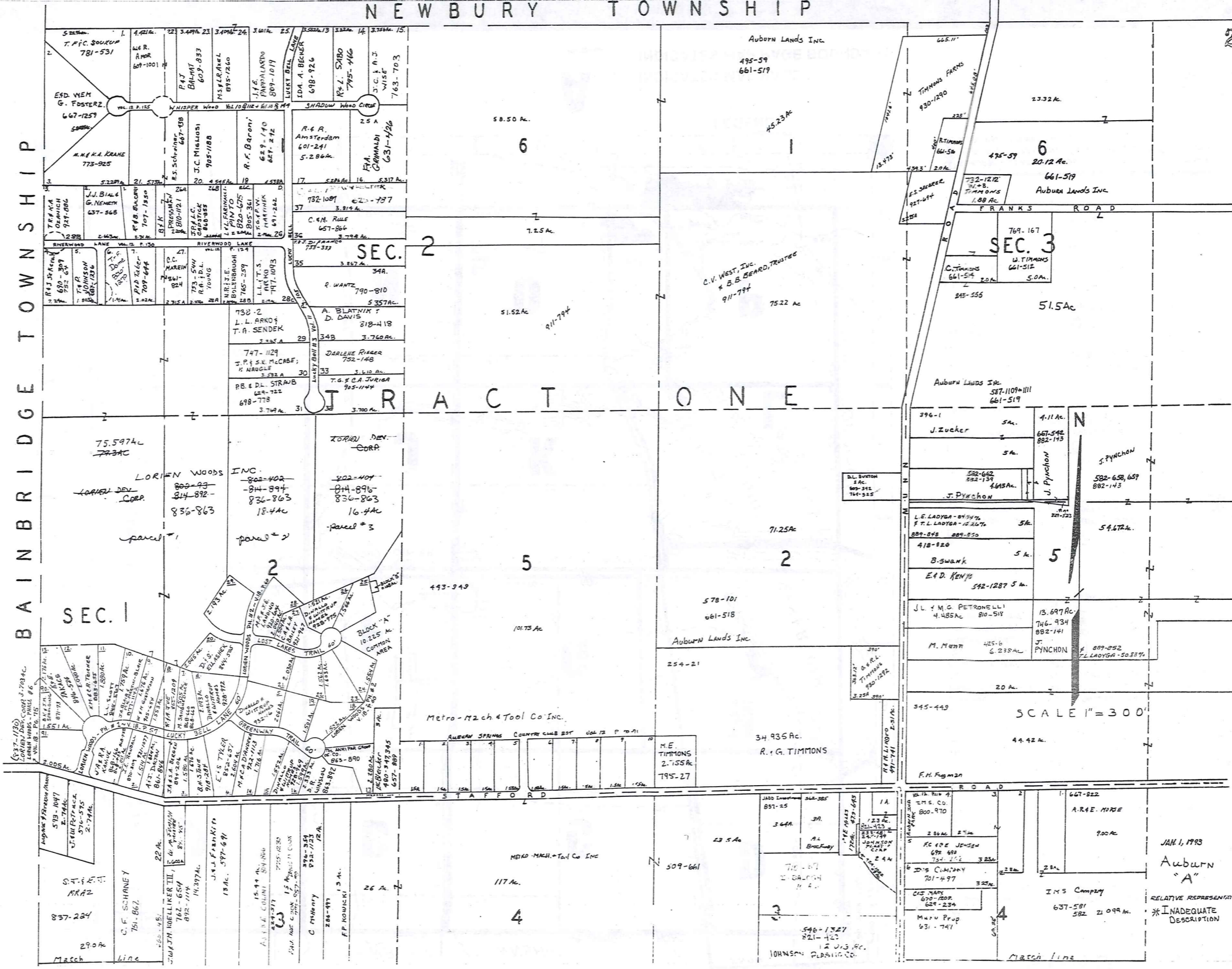
- - - UNPAVED ROAD - - - TOWNSHIP LINE
 = = = PAVED ROAD - - - COUNTY LINE

A ... INDICATES MAP PAGE
 - - - INDICATES MAP PAGE BOUNDARY

INDEX MAP OF
AUBURN TOWNSHIP
 GEauga COUNTY, OHIO

NEWBURY TOWNSHIP

BAINBRIDGE TOWNSHIP



TRW-REDI

SCALE IN 1/10 OF AN INCH

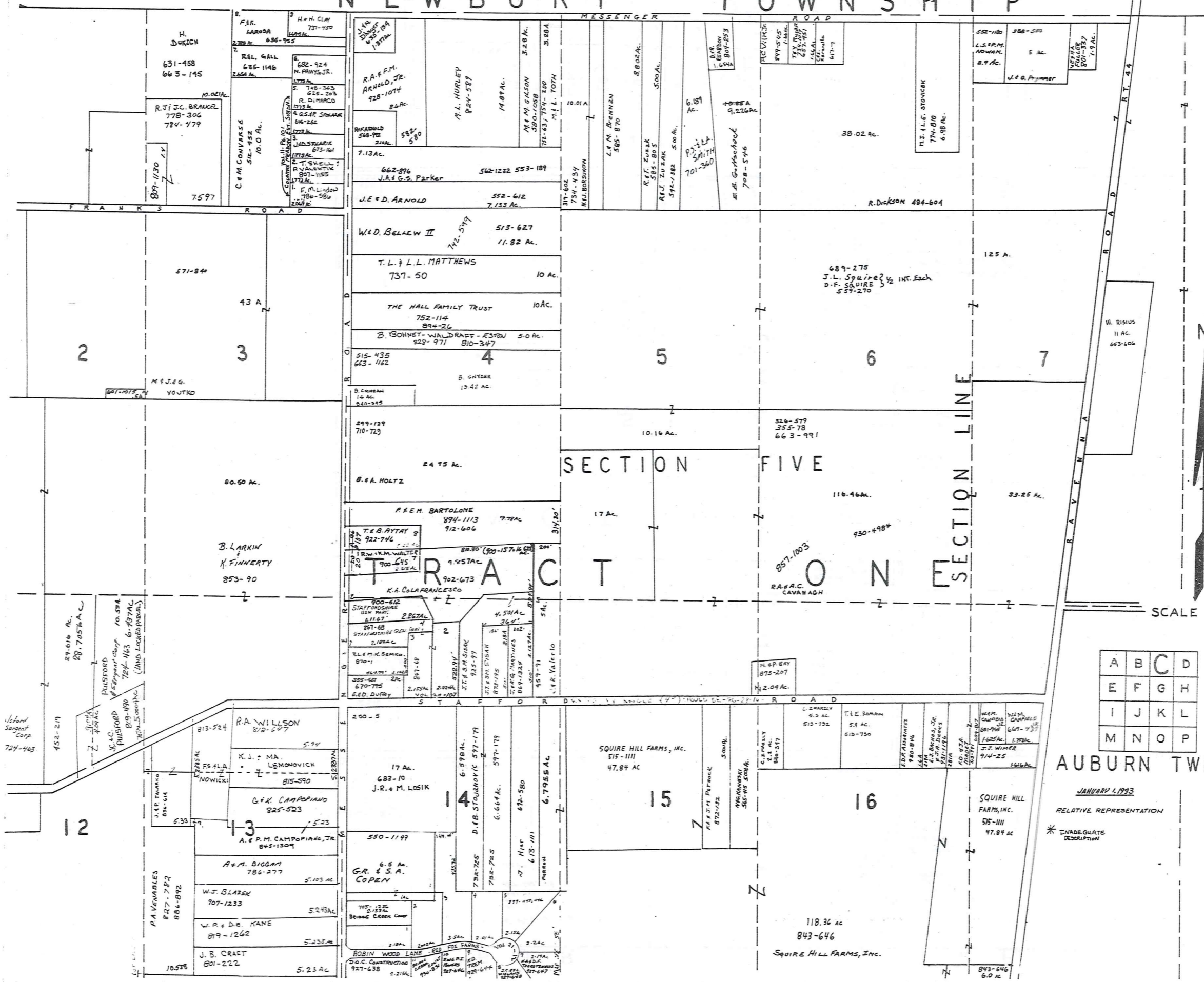
1-800-345-7334

JAN 1, 1993
Auburn
"A"

RELATIVE REPRESENTATION
* INADEQUATE DESCRIPTION

NEWBURY TOWNSHIP

TRV-REDI SCALE IN 1/10 OF AN INCH 1-800-345-7334



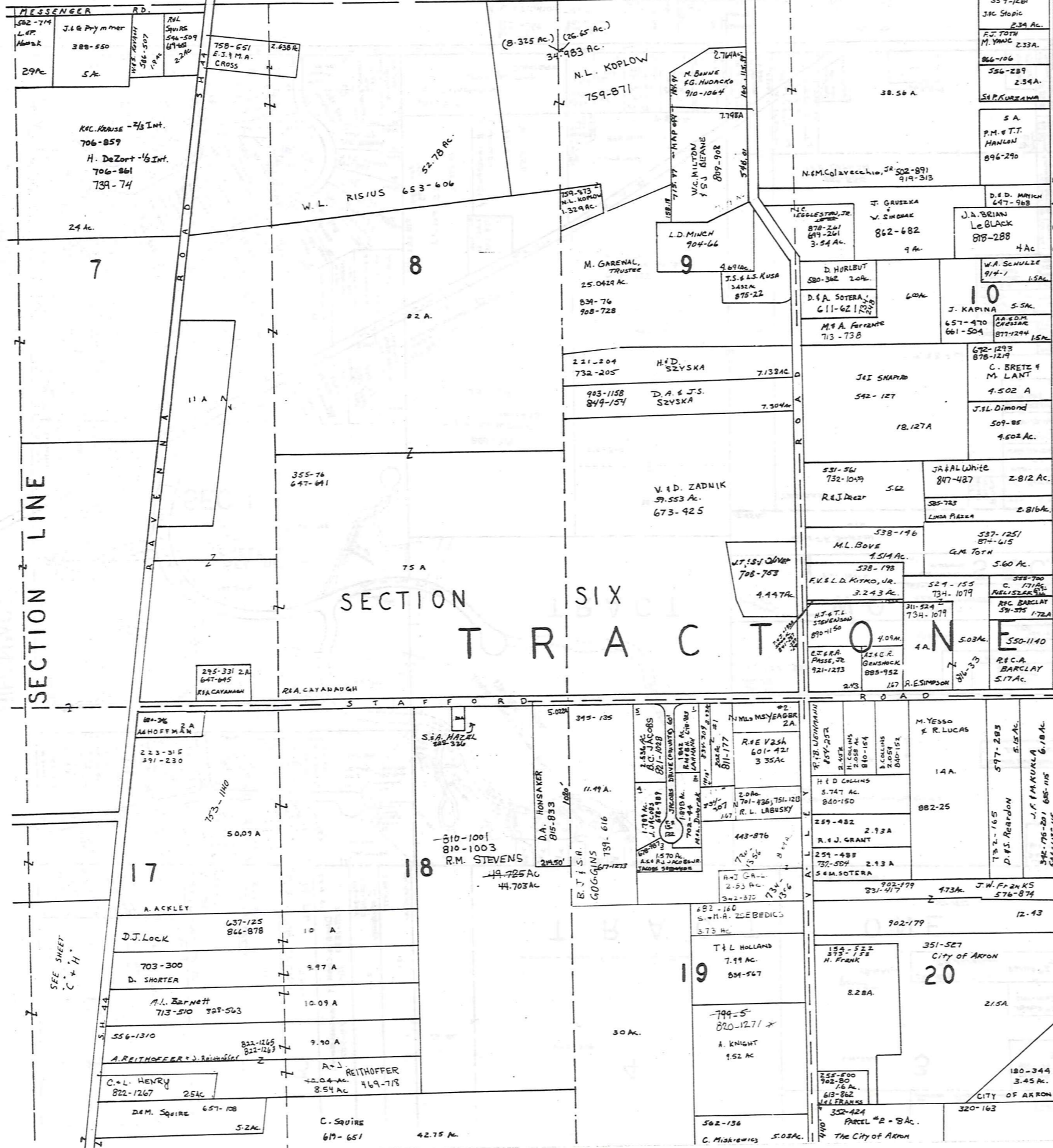
A	B	C	D
E	F	G	H
I	J	K	L
M	N	O	P

AUBURN TWP.

JANUARY 4, 1993
RELATIVE REPRESENTATION
* INADEQUATE DESCRIPTION

NEWBURY TOWNSHIP

BURTON TWP.



T R O W N S H I P



SCALE 1" = 300'

JANUARY 1, 1993
RELATIVE REPRESENTATION

A	B	C	D
E	F	G	H
I	J	K	L
M	N	O	P

AUBURN TWP.

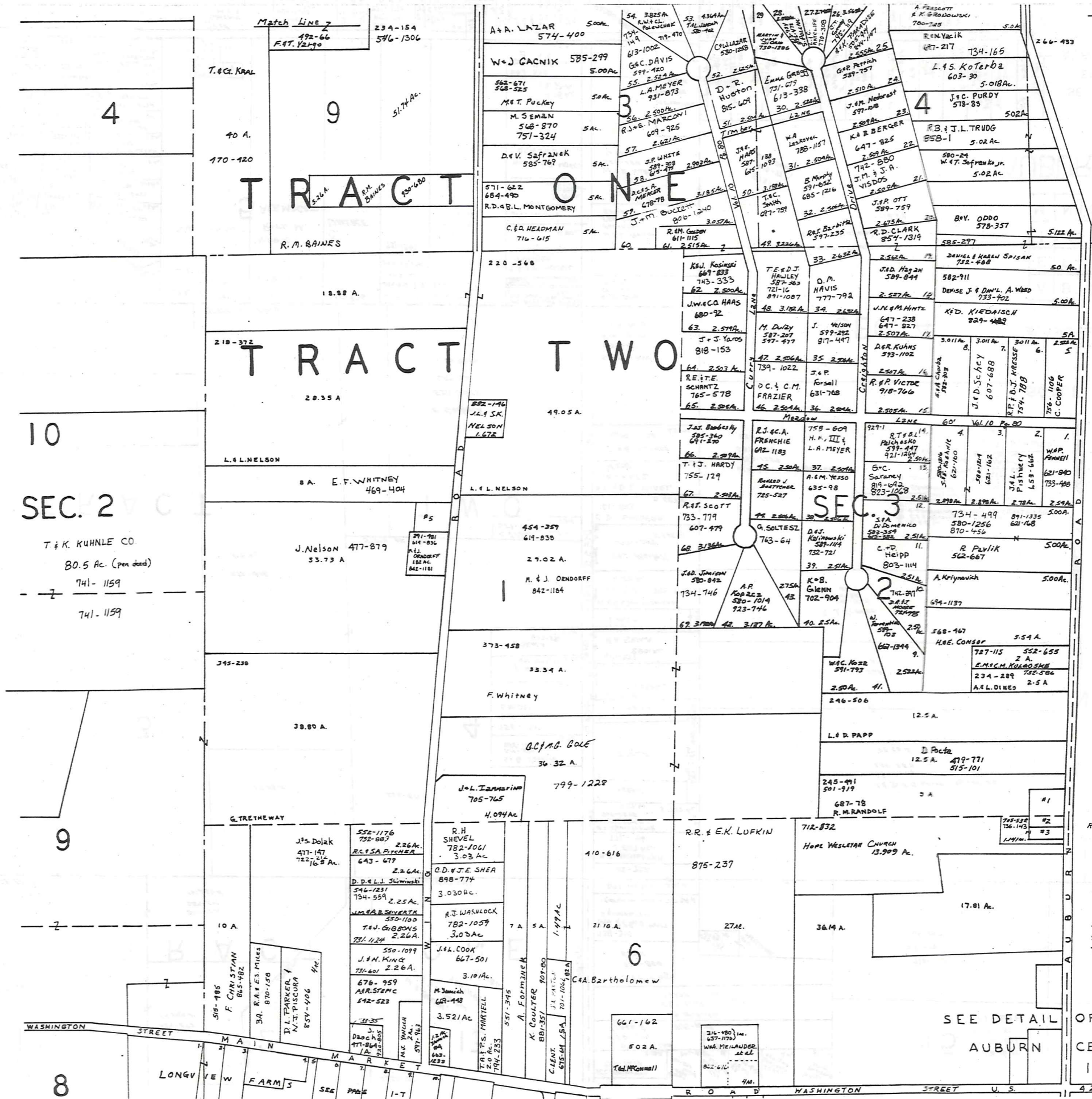
* INADEQUATE DESCRIPTION

TRW-REDI SCALE IN 1/10 OF AN INCH

1-800-345-7334

SECTION LINE

SEE SHEET C & H



Match Line

Match Line

SCALE 1"=300'
JAN 1, 1993

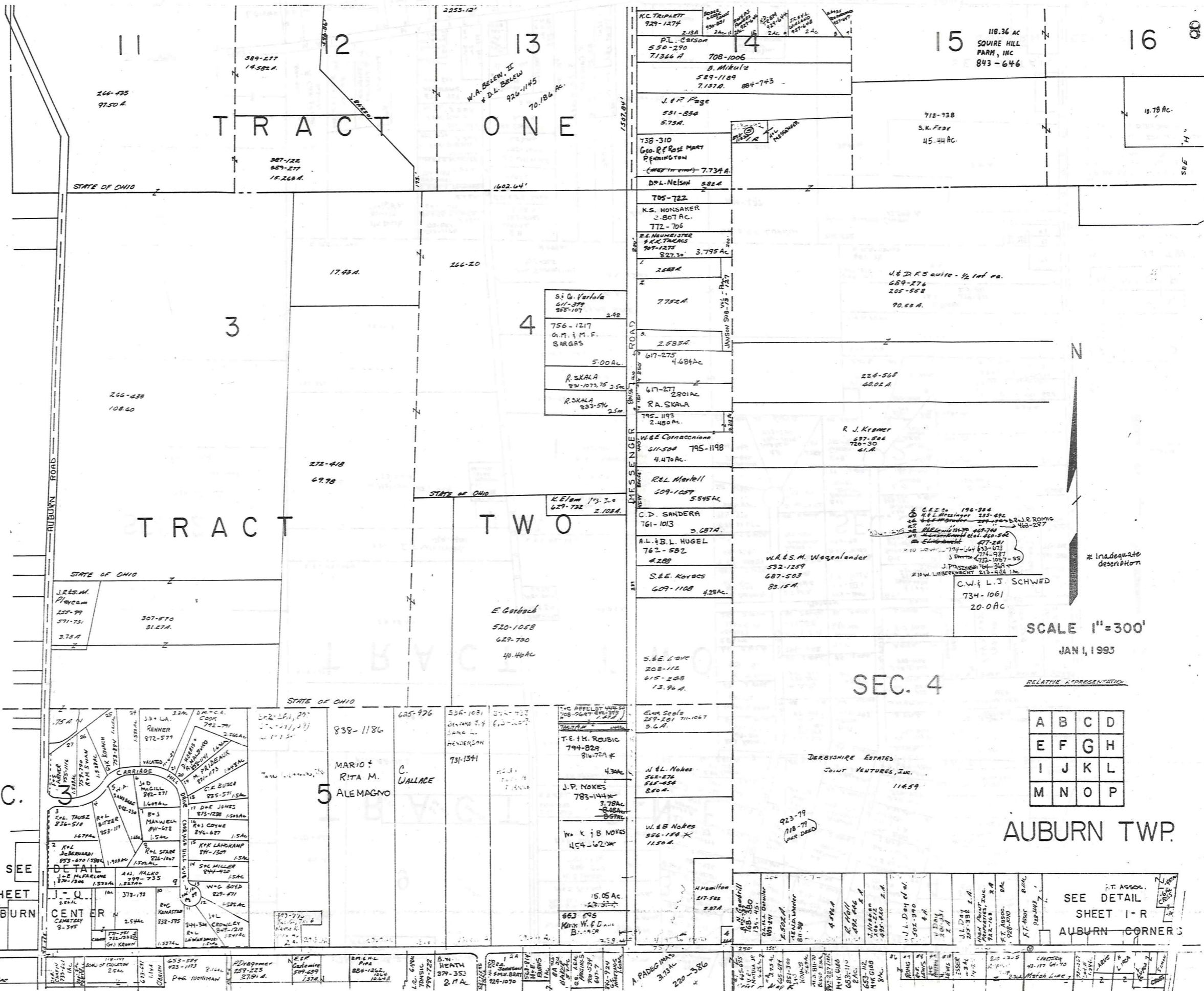
A	B	C	D
E	F	G	H
I	J	K	L
M	N	O	P

AUBURN TWP.
RELATIVE REPRESENTATION

No.
1. R. Randolph 752-305 1.4c.
2. D.P. Shiever 737-1316 0.46 Ac.
3. G.J. J. Matter 734-143 .55 Ac.
4. M.M. Yarnall 663-1232 1.2 Ac.
5. B. Whitney 287-123 712 Ac.
7. B.H. Van Dyke 308-191 1.4c.

SEE DETAIL OF
AUBURN
CENTER
I Q

TRW-REDI SCALE IN 1/10 OF AN INCH 1-800-345-7334



TRACT ONE

TRACT TWO

15 118.36 AC
SQUIRE HILL
FARM, INC
843-646

SCALE 1"=300'
JAN 1, 1993

A	B	C	D
E	F	G	H
I	J	K	L
M	N	O	P

AUBURN TWP.

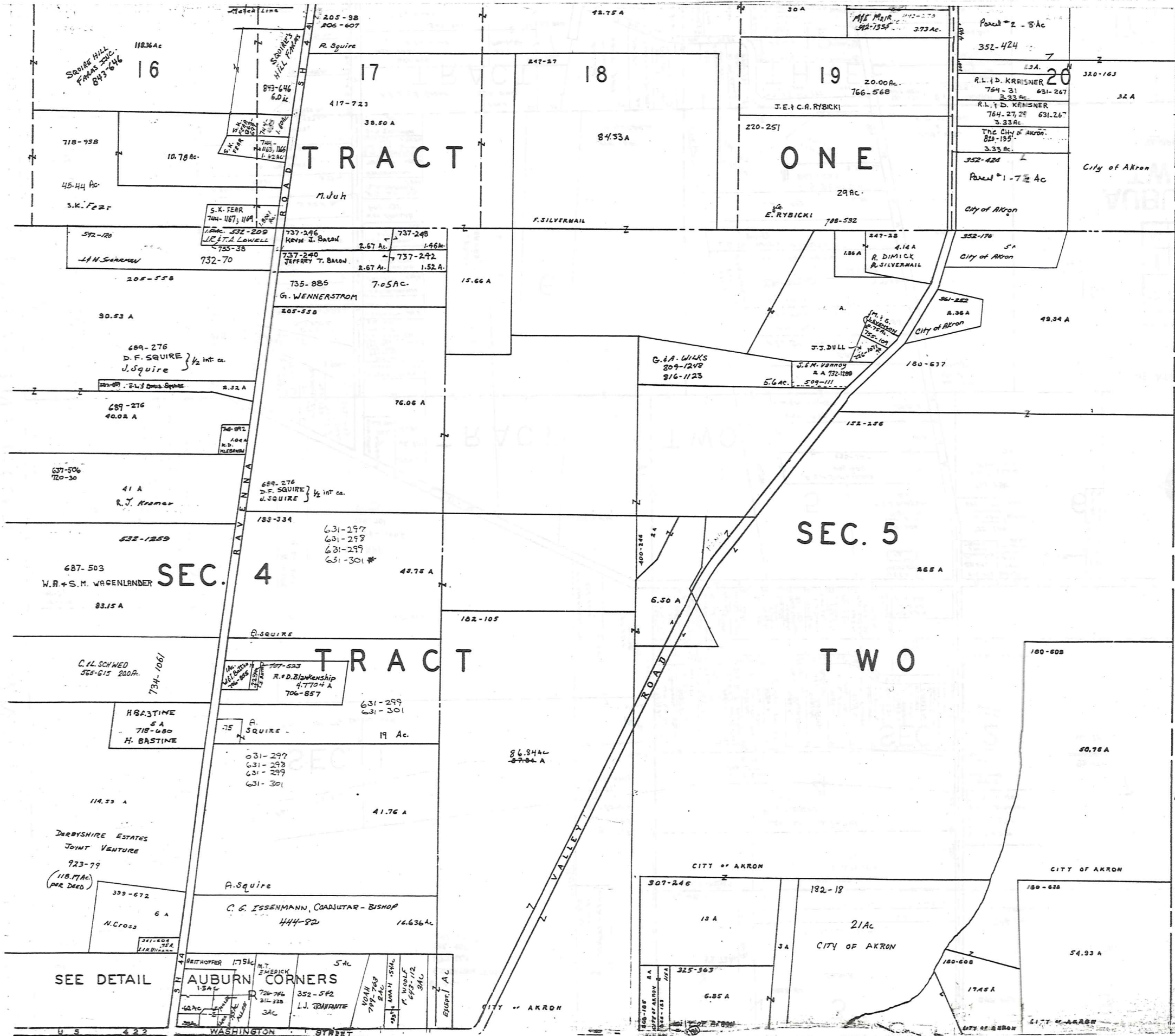
SEE DETAIL
SHEET I-R
AUBURN CORNER

TRW-REDI SCALE IN 1/10 OF AN INCH 1-800-345-7334

SEC. 3
SEE SHEET
AUBURN

DETAIL
CENTER

Match Line



TROY TOWNSHIP



SCALE 1"=300'

A	B	C	D
E	F	G	H
I	J	K	L
M	N	O	P

AUBURN TWP.

JANUARY 1, 1993
RELATIVE REPRESENTATION

* Inadequate description

(181) 59 AC - 187-298 CITY OF AKRON

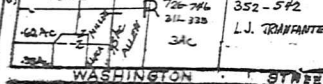
TRW-REDI SCALE IN 1/10 OF AN INCH



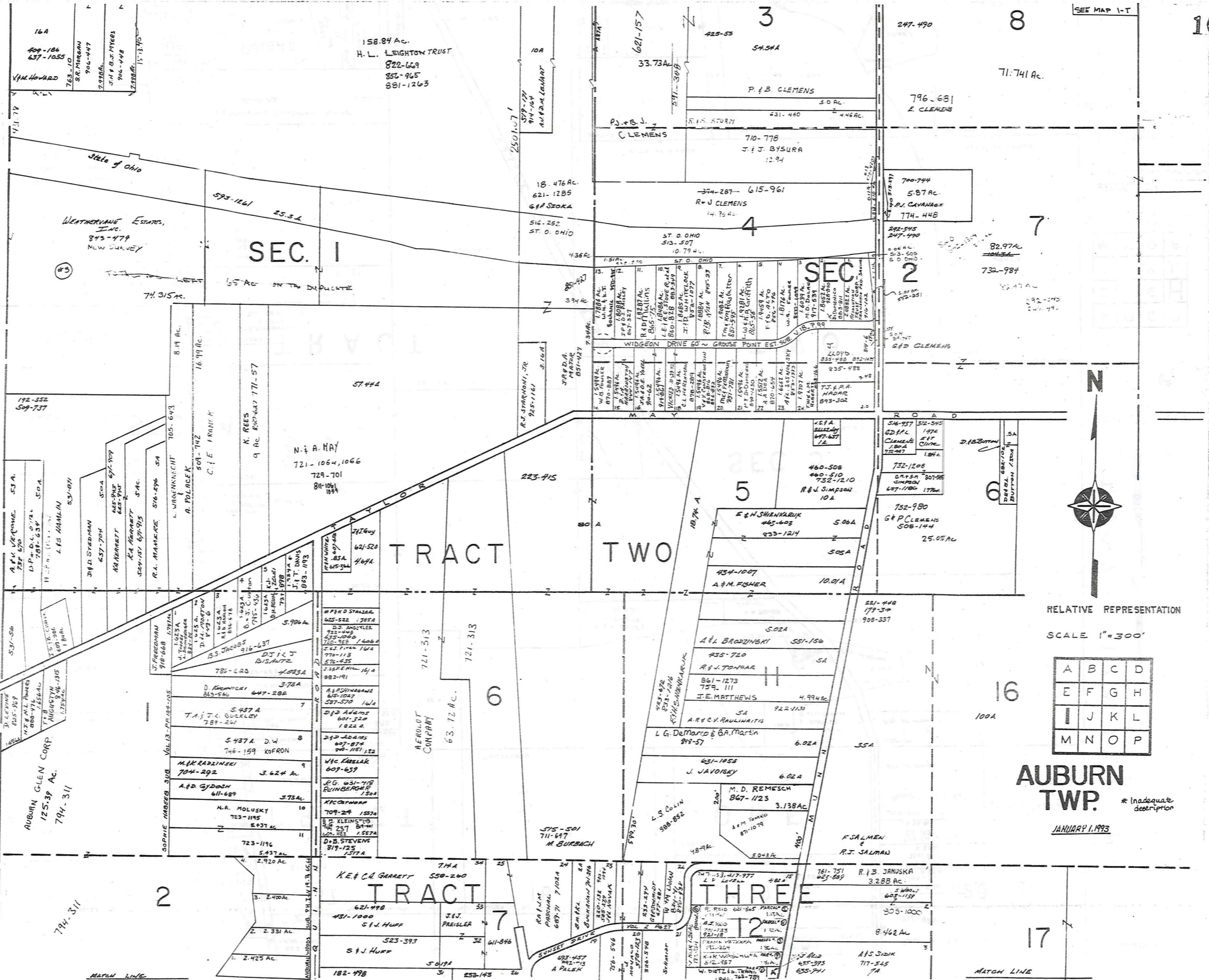
1-800-345-7334

SEE DETAIL

AUBURN CORNERS



BAINBRIDGE TOWNSHIP



RELATIVE REPRESENTATION
SCALE 1"=300'

A	B	C	D
E	F	G	H
I	J	K	L
M	N	O	P

AUBURN TWP.
JANUARY 1, 1993
* Inadequate description

TRW-REDI SCALE IN 1/10 OF AN INCH

1-800-345-7334

10

8

7

16

17

16A
409-186
637-1055
V.M. HOWARD

158.84 AC.
H. L. LEIGHTON TRUST
822-669
856-965
881-1263

3

247-490

796-681
E. CLEMENS

SEC. 1

SEC. 2

TRACT TWO

TRACT THREE

AUBURN GLEN CORP.
125.39 AC.
794-311

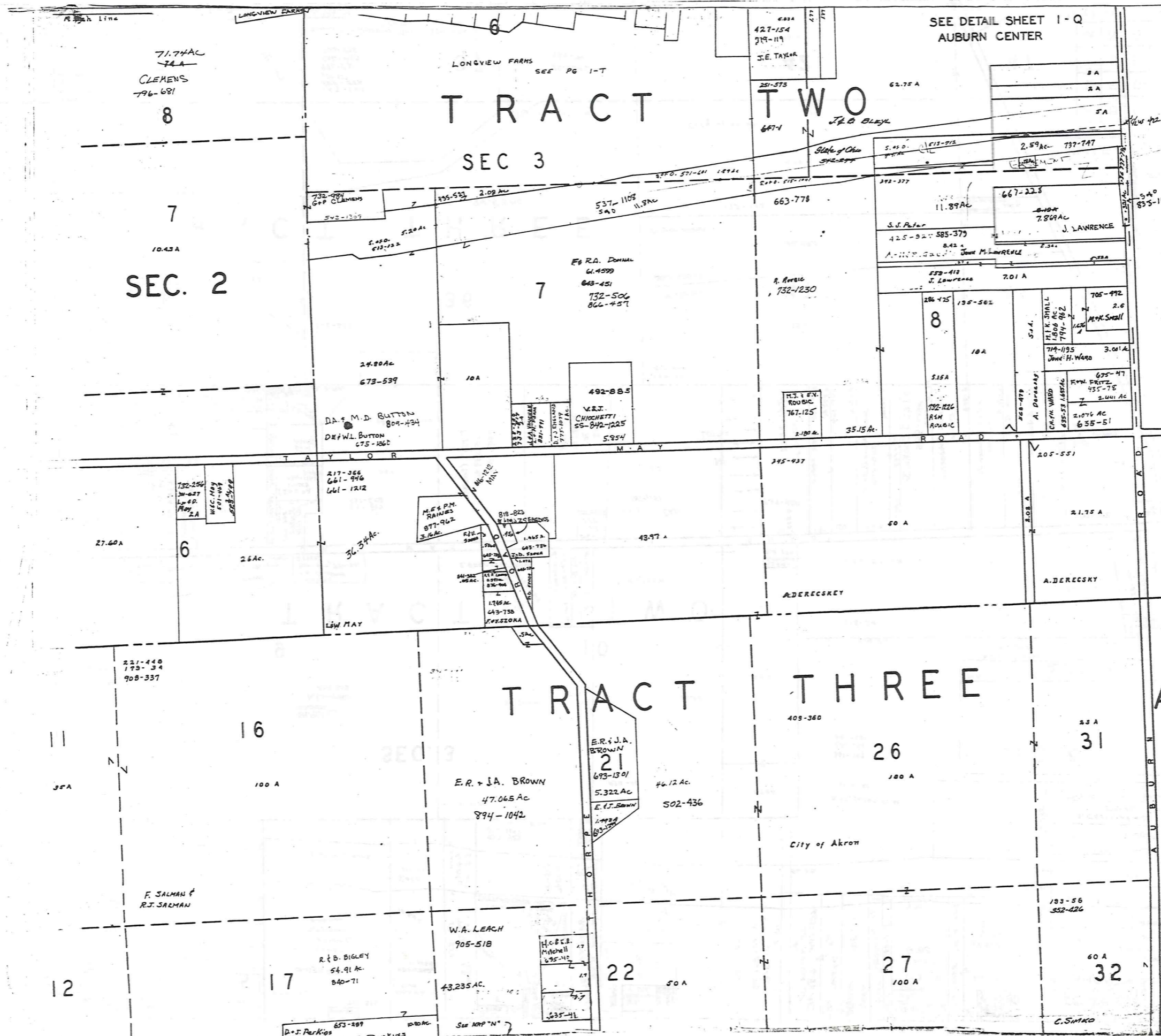
TRACT TWO

TRACT THREE

794-311

MATCH LINE

MATCH LINE



SEE DETAIL SHEET I-Q
AUBURN CENTER

TRACT TWO

SEC 3

SEC. 2

TRACT THREE

AUBURN TWP.

SCALE 1"=300'

A	B	C	D
E	F	G	H
I	J	K	L
M	N	O	P

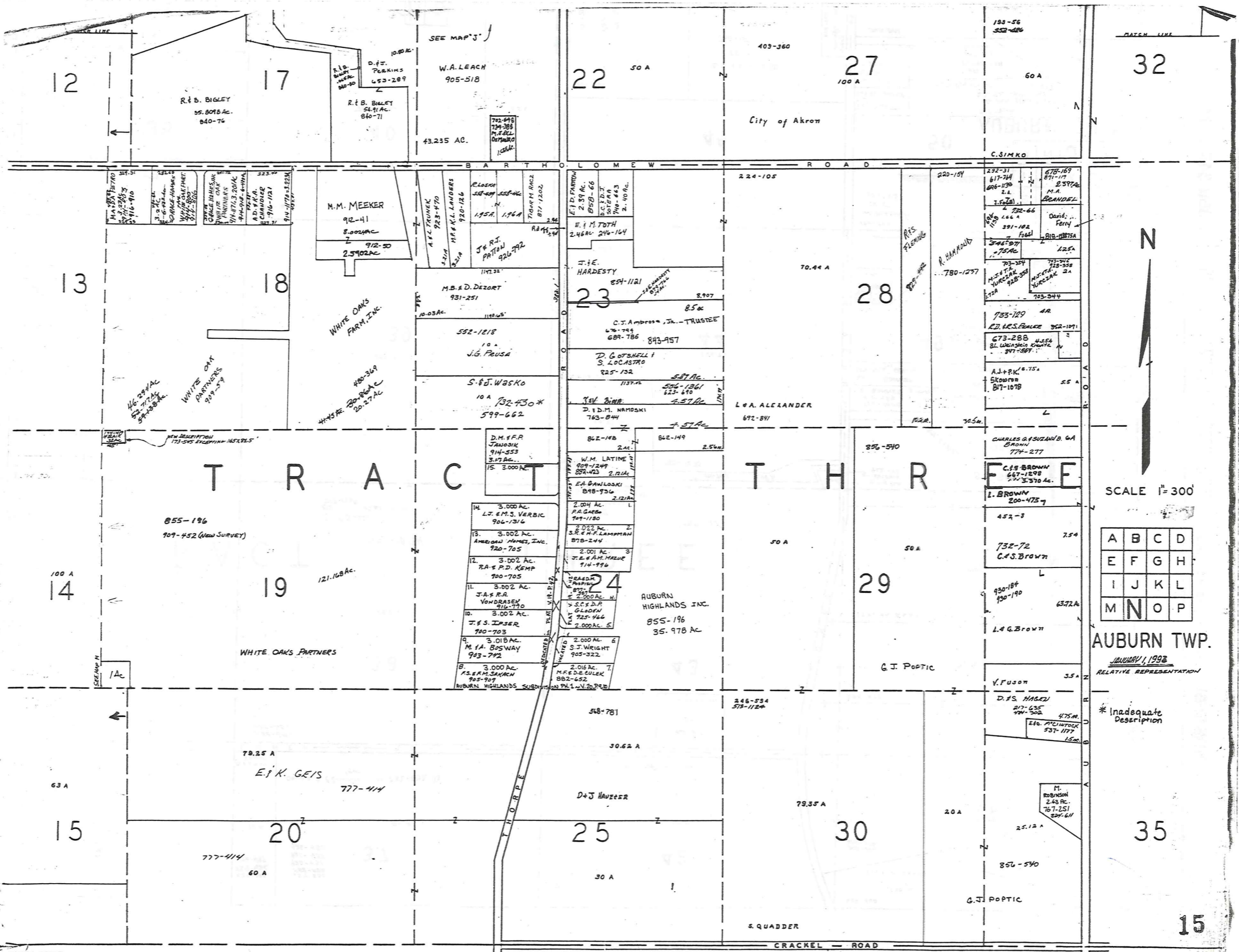
JANUARY 1, 1993

RELATIVE REPRESENTATION

* Inadequate description

TRW-REDI SCALE IN 1/16 OF AN INCH

1-800-345-7334



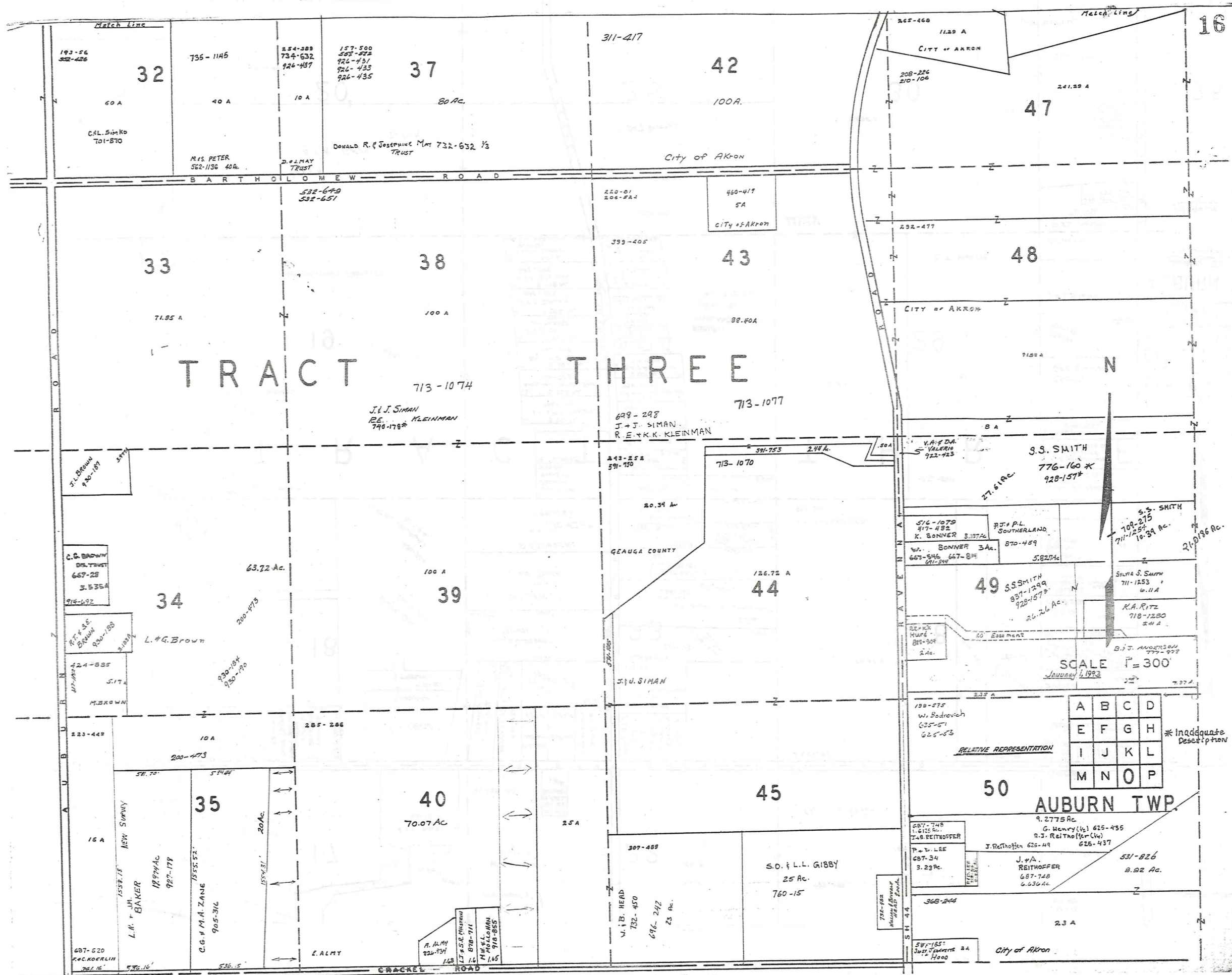
TRW-REDI
 SCALE IN 1/10 OF AN INCH
 1-800-345-7334

A	B	C	D
E	F	G	H
I	J	K	L
M	N	O	P

AUBURN TWP.
 JANUARY, 1998
 RELATIVE REPRESENTATION

* Inadequate Description

15



TRACT THREE

J. J. SIMAN
 RE: KLEINMAN
 798-178*

699-298
 J. J. SIMAN
 R. E. & K. K. KLEINMAN

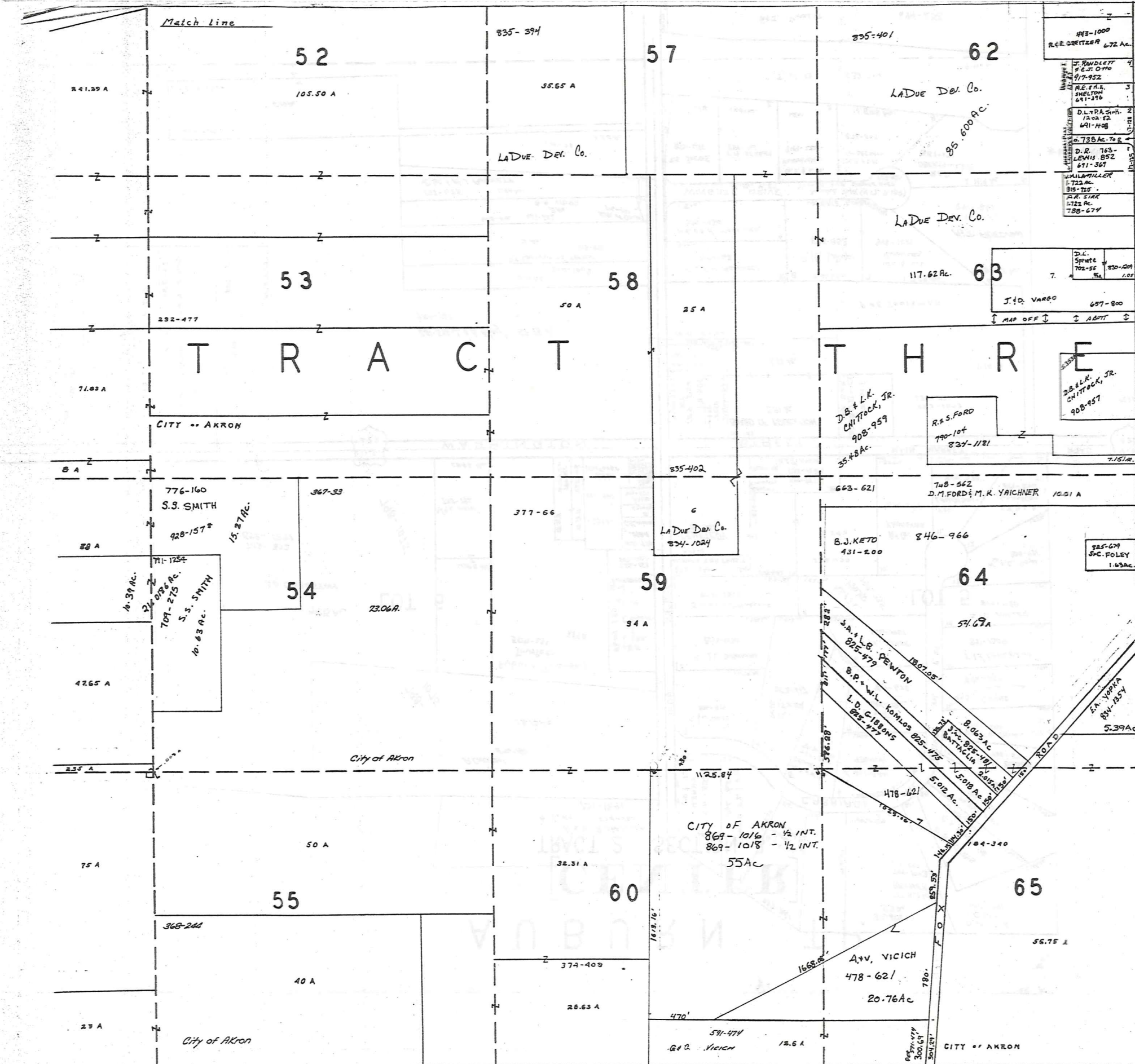
SCALE 1" = 300'
 January 1, 1993

A	B	C	D
E	F	G	H
I	J	K	L
M	N	O	P

* Inadequate Description

AUBURN TWP.

TRW-REDI SCALE IN 1/10 OF AN INCH 1-800-345-7334



Match Line

412-1000
R.E. GREITZER 672 Ac.

J. RANDLETT
443-074
917-952

R.E. F.H.A.
SHELTON
691-216

D.L. P.A. SIMP.
12-28-62
491-148

D.R. 763-
LEWIS 852
671-367

V.18-P.31,32 (connecting owners names of 60 Strip:
D. LEWIS; D. T. SIRK; M. E. DOOLEY
827-392

7. D.C. Sprute
702-55 830-604
2.07

J.D. VARCO 687-800
MAP OFF ↓ ABHT ↓

R.S. FORD
790-104
837-1181

D.B. & L.K. CHITTOCK, JR.
908-959
35.48 Ac.

D.B. & L.K. CHITTOCK, JR.
908-957

748-562
D.M. FORD & M.K. YAICHNER 10.01 A

B.J. KETO 431-200 846-966

785-674
J.C. FOLEY
1.63 Ac.

J.A. & L.B. PEWTON
825-479

B.P. & W.L. KOHLER 825-475

L.D. CIBBONS
825-477

8.063 Ac.
BATTALIA
330-89-101

E.A. VORPA
834-154
5.39 Ac.

SCALE 1" = 300'

JANUARY 1, 1993

A	B	C	D
E	F	G	H
I	J	K	L
M	N	O	P

* Inadequate Description

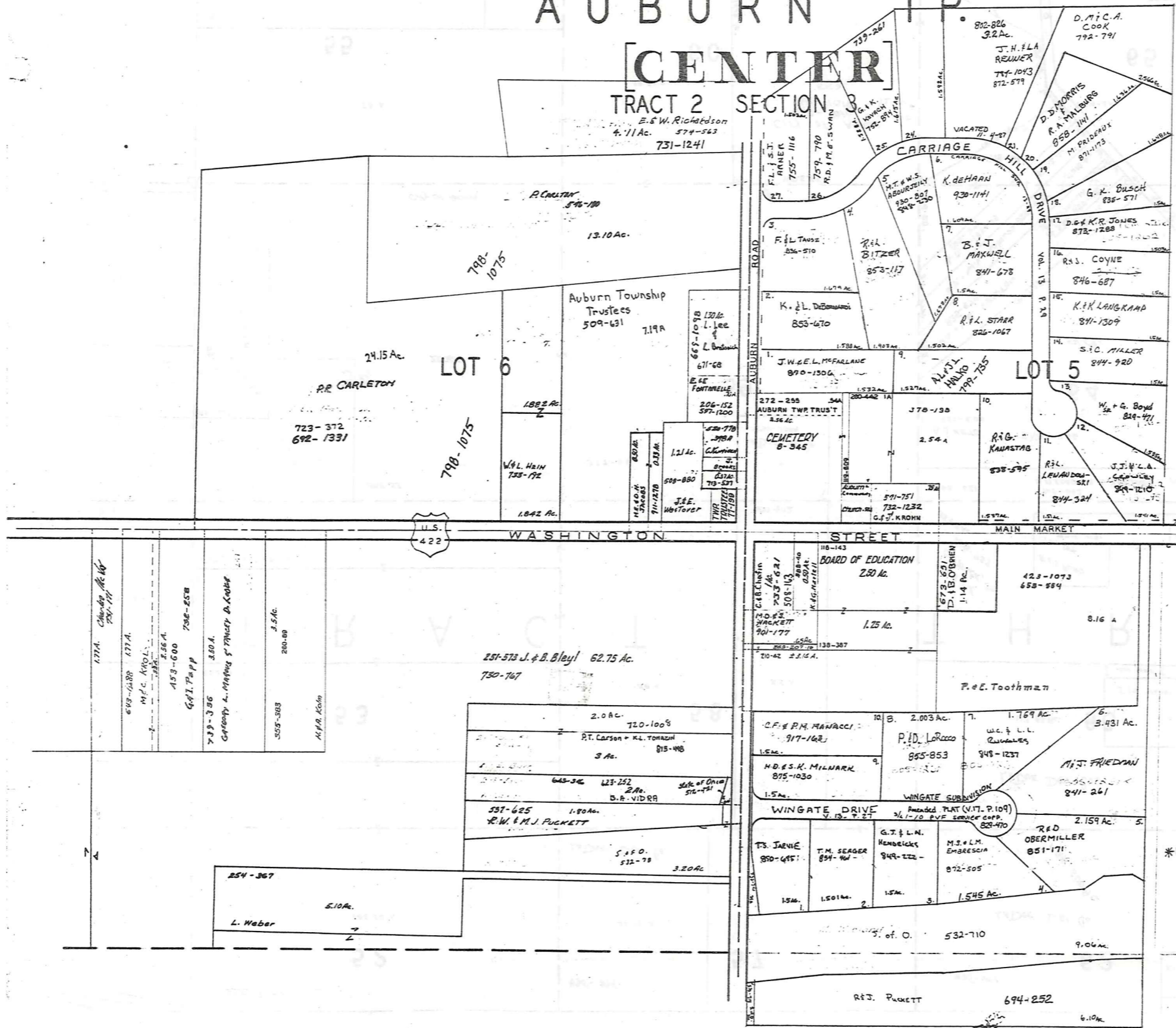
AUBURN TWP.

RELATIVE REPRESENTATION

TRW-REDI SCALE IN 1/10 OF AN INCH 1-800-345-7334

AUBURN TP.

[CENTER] TRACT 2 SECTION



TRW-REDI SCALE IN 1/10 OF AN INCH



1-800-345-7334

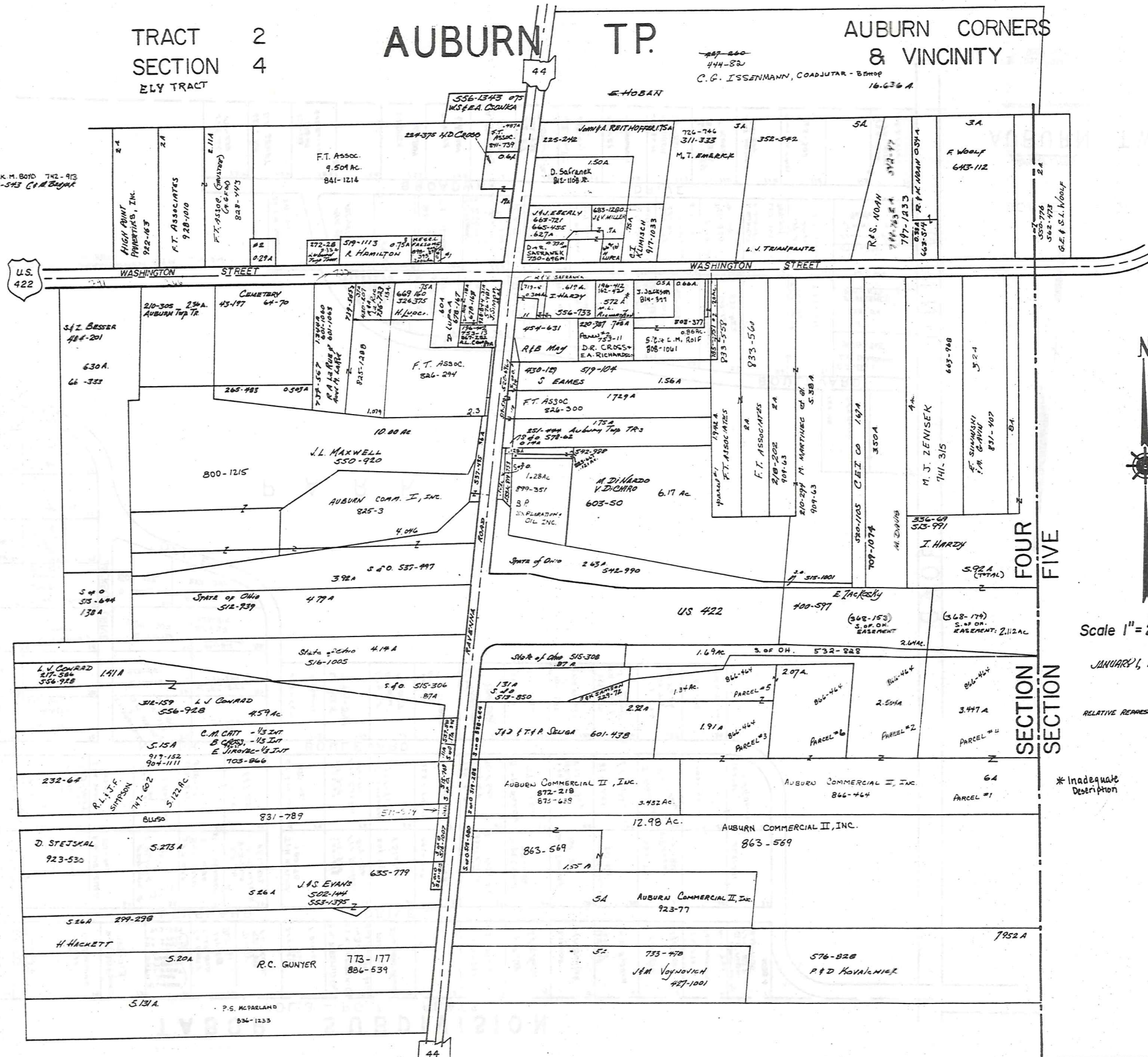
TRACT 2
SECTION 4
ELY TRACT

AUBURN TP.

AUBURN CORNERS
& VICINITY

42
W. J. G. & K. M. BOYD 742-913
73-373-543 C. M. Boyer

487-860
444-830
C. G. ISSENMANN, COADJUTOR - Bishop
16.636 A.



TRW-REDI
SCALE IN 1/10 OF AN INCH

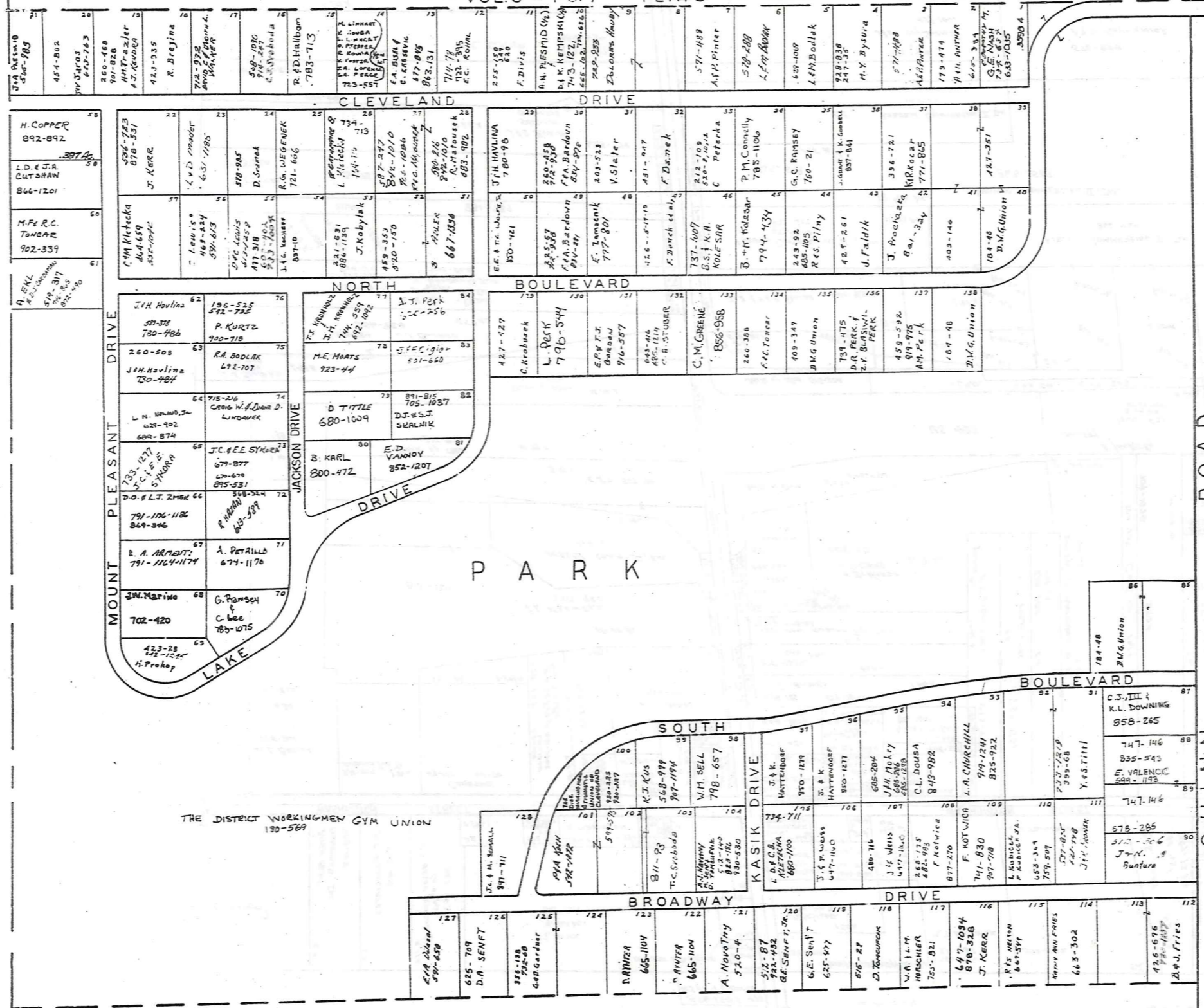


1-800-345-7334

1-19

TABOR SUBDIVISION

VOL. 3 - PG. 7 PLATS



SCALE 1" = 100'

JANUARY 1, 1993
AUBURN TWP.

RELATIVE REPRESENTATION

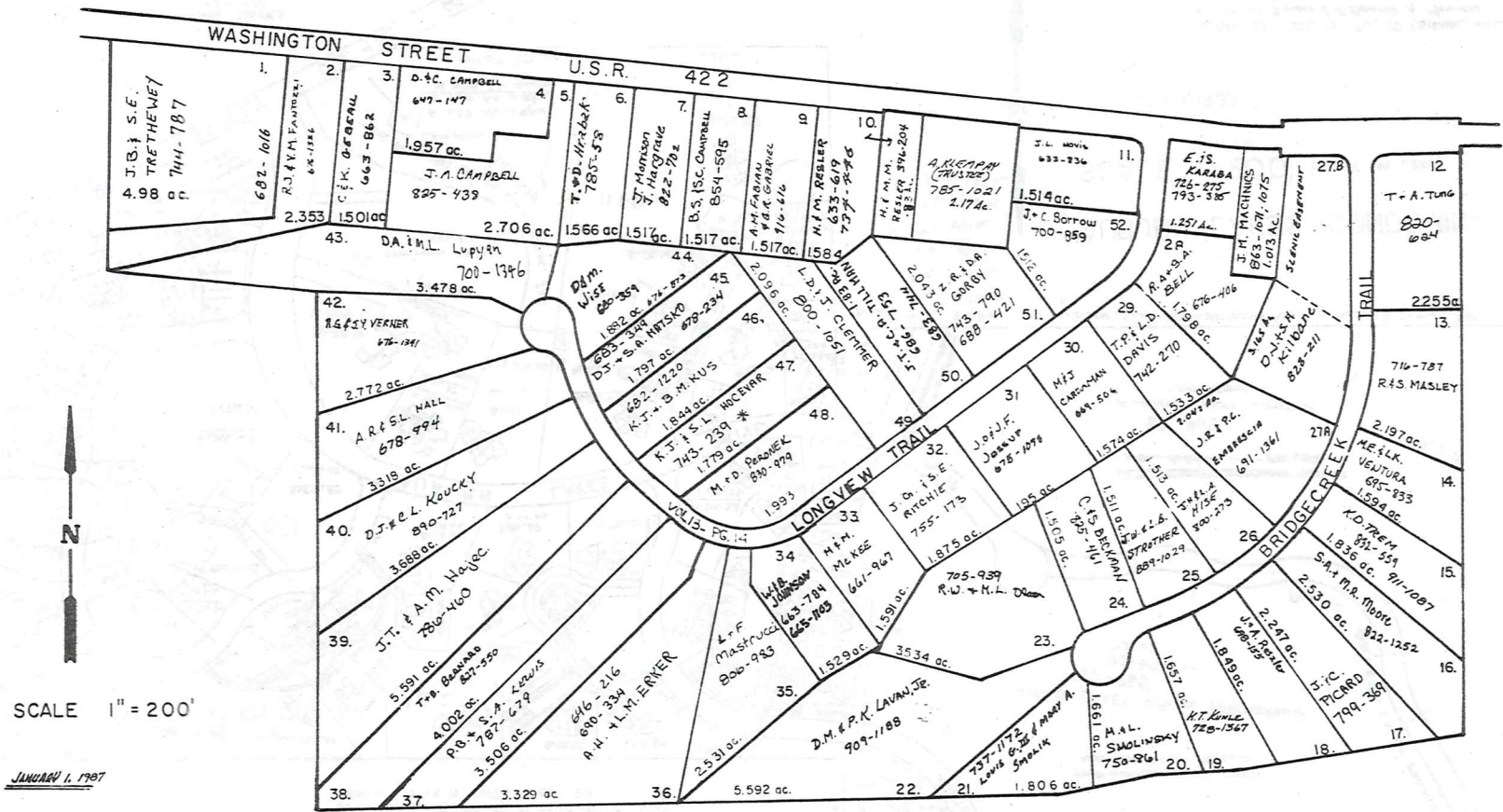
* Inadequate Description

TRW-REDI SCALE IN 1/10 OF AN INCH



1-800-345-7334

AUBURN
 OL. 8 SEC. 2
 OL. 6 SEC. 3 TRACT 2



S/L 27 RESUB Vol. 14-P6.50

SCALE 1" = 200'
 JANUARY 1, 1987

LONGVIEW FARMS 1 & 2

VOL. 12 PP. 62-64
 VOL. 13 PP. 13-16

JANUARY 1, 1993
 RELATIVE REPRESENTATION

* Inadequate Description

TRW-REDI SCALE IN 1/10 OF AN INCH 1-800-345-7334

BLDG. 124 VOL. 18 PG. 95 TO 98 (EAGLES POINTE)
A-435 ~ E.O. MARCH 841-263

BLDG. 125 VOL. 18 PG. 137 TO 141 (EAGLES POINTE)
A-436 ~ W.F. MUNDAY, JR. & R.M. MUNDAY 842-1275
BLDG. 118 VOL. 18 PG. 145 TO 153 (CHIPPING LANE)
A-429 ~ D.G. WINGLESWORTH 850-1216

BLDG. 129 VOL. 18 PG. 133 (LONG DRIVE)
A-440 ~ G.P. O'BRIEN 847-477
BLDG. 130 VOL. 18 PG. 121 (LONG DR.)
A-441 ~ A. HUTSON 844-574 853-1059

BLDG. 115 VOL. 18 PG. 137 TO 141 (CHIPPING LANE)
A-426 ~ D.S. & G.J. MANNING 849-808

BLDG. 44 VOL. 18 PG. 145 TO 153 (WOODSONG WAY)
A-196 ~ K.F. SORACE 853-136

BLDG. 61 VOL. 18 PG. 145 TO 153 (OVERLOOK BROOK DRIVE)
A- ~ E. BERTON 852-34

BLDG. 114 VOL. 19 PG. 16 TO 18 (CHIPPING LANE)
A-425 ~ B.A. RESCH 855-433

BLDG. 113 VOL. 19 PG. 31 TO 35 (FAIRWAY VIEW)
A-402 ~ S. PETERSON 878-926

BLDG. 120 VOL. 19 PG. 59 TO 62 (CHIPPING LANE)
A- ~ S.L. & M.R. DURCHSLAG 896-678
B-432 ~ P.J. LEIKEN 861-935

BLDG. 51 VOL. 19 PG. 88 TO 91 (TWIN CREEKS)
A-244 ~ R.T. & J. KEALS 865-728
B-246 ~ K.M. CARLSON 879-72 863-310

BLDG. 117 VOL. 19 PG. 145

BLDG. 76 VOL. 17 PG. 47 TO 58 (HEATHER HILL)
A-226 ~ G. Bianchini & N. Bean 818-676

BLDG. 45 VOL. 17 PG. 84 TO 92 (WOODSONG WAY)
A-198 ~ M.O. STANTON-HICKS 821-1262

BLDG. 67 VOL. 17 PG. 84 TO 92 (OVERLOOK BROOK DRIVE)
A-328 ~ J.W. & J.H. BRANTIGNAN 845-979
B-330 ~ E. LARZO 821-301

BLDG. 74 VOL. 17 PG. 119 TO 122 (HEATHER HILL)
A- ~ C.C. SPATH 831-1354
B-220 ~ W.F. HOTCHKIN 827-422
C-28 ~ W.P. MILLER 833-265

BLDG. 71 VOL. 17 PG. 131 TO 138 (HEATHER HILL)
A- ~ J.H. GRANOVSKA 824-754
B-212 ~ W.J. & E.J. OSBORN 849-243

BLDG. 108 VOL. 17 PG. 143 TO 147 (FAIRWAY VIEW)
A-422 ~ E.F. Gallo 831-479

BLDG. 48 VOL. 18 PG. 33 TO 38 (WOODSONG WAY)
A-204 ~ W.L. RISIUS 841-370

BLDG. 126 VOL. 18 PG. 33 TO 38 (EAGLES POINTE)
A-457 ~ D.F. HUNTER 825-337

BLDG. 68 VOL. 18 PG. 62 TO 68 (OVERLOOK BROOK DR.)
A- ~ 334 ~ T.J. JOHNSON 837-18
B- ~ 336 ~ L.H. & F.C. KINCAID 840-23
C- ~ 338 ~ A. & S. ARMSTRONG 842-143

BLDG. 73 VOL. 18 PG. 62 TO 68 (HEATHER HILL)
A-216 ~ M. & R. WILLIAMS 837-528

BLDG. 119 VOL. 18 PG. 76 TO 79 (CHIPPING LANE)
A-430 ~ D.J. & R.M. JOYCE 860-316

BLDG. 41 VOL. 17 PG. 8 TO 16 (WOODSONG WAY)
A-202 ~ M. PENSIATO 844-749

BLDG. 53 VOL. 17 PG. 8 TO 16 (TWIN CREEKS DRIVE)
A-256 ~ J. & B. COLLIER 817-560
B-258 ~ H. & H. DUNLOP 813-919

BLDG. 70 VOL. 17 PG. 8 TO 16 (HEATHER HILL)
A-210 ~ D.C. DAZIMA 815-1045
B-208 ~ V. & P. SCOCOS 813-697

BLDG. 2 VOL. 17 PG. 47 TO 58 (WINDWARD WAY)
A-64 ~ D.A. BRIDGEMAN 819-69
B-62 ~ J. KINZIG 820-200

BLDG. 75 VOL. 17 PG. 47 TO 58 (HEATHER HILL)
A-224 ~ R. & E. BLAKE FAMILY TRUST 818-119/864-721

BLDG. 40 VOL. 16 PG. 118 TO 122 (WOODSONG WAY)
A-188 ~ C.T. GROTH 831-631

BLDG. 65 VOL. 16 PG. 123 TO 126 (OVERLOOK BROOK DRIVE)
A-312 ~ J. & J. HALLBACK 803-427

BLDG. 54 VOL. 16 PG. 148 TO 155 (TWIN CREEKS DRIVE)
A-262 ~ F. ADLER 804-284

BLDG. 55 VOL. 16 PG. 148 TO 155 (TWIN CREEKS DRIVE)
A-264 ~ G. & S. VILLERS 820-363
B-266 ~ J. & S. KALISER 861-369

BLDG. 64 VOL. 16 PG. 148 TO 155 (OVERLOOK BROOK DRIVE)
A-310 ~ M. & S. DUFFY 808-136

BLDG. 46 VOL. 17 PG. 151 TO 158 (WOODSONG WAY)
A- ~ R. & C. GOWLAND 824-714

AUBURN LAKES CONDO -
WINDWAY WAY (PRIVATE):

W-1: VOL. 15 - PG. 1
A-66 ~ M. & N. LAVIN 718-161

W-2:
A-64 ~
B-62 ~
C-60 ~

W-3: VOL. 14 - PG. 110 - 115
A-54 ~ A. D'OHANIO 855-1040
B-52 ~ W. J. RINI 708-427

W-4: VOL. 14 - PG. 110 - 115
A-50 ~ D. DOLCH 718-1127
B-48 ~ G. & B. M. KINGS 842-553
TRUSTEES 817-216

W-5:
A-58 ~
B-56 ~

W-6: VOL. 15 - PG. 1
A-46 ~ D. J. MATZ 718-205
B-44 ~ WAYNE L. RISIUS 735-1292
C-42 ~ W. T. MASTERS 824-405

W-7: VOL. 14 - PG. 72
A-40 ~ M. A. BERG & S. LYNN 823-949
B-38 ~ H. EPPRECHT 700-1300
C-36 ~ C. HOLYLAND 714-720 872-22

W-8: VOL. 14 - PG. 130 - 136
A-34 ~ D. F. LEDERER 922-1187
B-32 ~

W-9: VOL. 14 - PG. 72 (WINDWARD WAY)
A-30 ~ B. S. TERPBAK 713-468
B-28 ~ B. DEURSCHE 919-67
C-26 ~ B. H. WARNER 881-980

W-10: VOL. 14 - PG. 110 - 115
A-24 ~ G. C. HERMAN 861-970
B-22 ~ K. & D. WERNER 707-1155
C-20 ~ H. EPPRECHT 867-295

W-11: VOL. 14 - PG. 130 - 136 (WINDWARD WAY)
A-16 ~ LAKESIDE ESTATE SERVICE, 917-485;
W. 17 - P. 103 (ADDITION AMENDMENT)

W-12: VOL. 14 - PG. 72
A-14 ~ R. J. SCHULLI 701-737
B-12 ~ C. L. DOBBS, TRUSTEE 887-910
C-10 ~ STEPHEN M. & CHARLOTTE T. GUN 727-160

BLDG. 21: VOL. 14 - PG. 124 / VOL. 15 - PG. 21
A-100 ~ J. R. & E. HANN 879-641
B-102 ~ J. V. WHITE, JR. 901-1028
C-104 ~ B. W. & R. H. GILLES 907-1149

BLDG. 20: VOL. 14 - PG. 141 - 144
A-96 ~ M. & M. M. M. 824-62
B-98 ~ R. G. ROBERTS 716-97

BLDG. 34: VOL. 15 - PG. 1
A-100 ~ G. & N. HARTLEY 793-677
B-102 ~ V. & B. WEBER 822-476
C-104 ~ THOMAS J. & CAROL J. SMY 736-799

UNIT 15: VOL. 15 - PG. 17 (COVE COURT)
A-74 ~ T. D. & D. R. CLARK 765-634
B-70 ~ T. B. BOATER 826-333
C-78 ~ A. LIDGLEY 874-398 848-550

UNIT 19: Vol 15 pg 27
A-92 ~ M. D. JUBILL 806-1238
B-94 ~ M. JACQUELINE HANRY 726-370 726-1081

BLDG. (UNIT) 14: VOL. 15 - PG. 48 TO 52
A-68 ~ C. J. & D. M. MCBRIDE 749-652
B-70 ~ T. & P. & G. CAHILL 720-1250
C-78 ~ DONALD & DORIS WISE 730-944

UNIT 28 VOL. 15-56
A-138 ~ P. & E. K. HALL 824-645
B-140 ~ H. & B. F. SWINLEY, JR. & MARY 733-49 TRUSTEE 897-1252

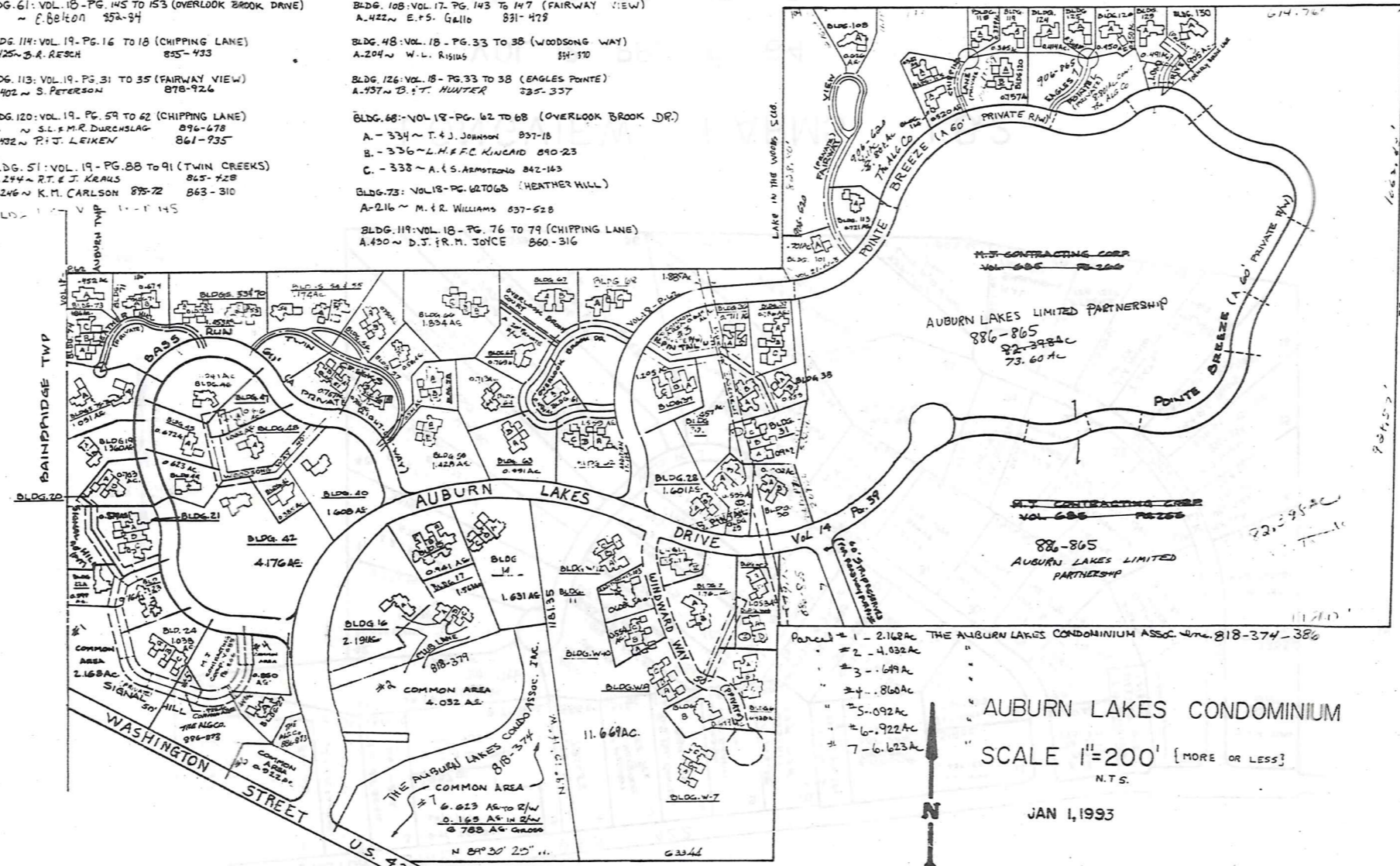
UNIT 24 VOL. 15 PG. 60-67
M. L. J. & N. DOLAN 884-24

UNIT 29 VOL. 15 - PG. 60 (S. PINTAIL)
A-142 ~ JOEL J. & ROSA L. LIPMAN 736-97
B-144 ~ R. E. & R. M. FRUIT 877-143

UNIT 17: VOL. 15 - PG. 91 (CLUB LANE)
A-84 ~ M. & A. SCHWARTZ 856-327
B-86 ~ S. & N. THOMPSON 771-867
C-88 ~ H. T. FAY 748-210

* INADEQUATE DESCRIPTION

LAND IN THE WOODS SUBDIVISION VOL. 11 PG. 33



AUBURN LAKES CONDOMINIUM
SCALE 1"=200' [MORE OR LESS]
N.T.S.

JAN 1, 1993

BLDG. 59 VOL. 16 PG. 35 TO 42 (TWIN CREEKS)
A-282 ~ R.C. & S.C. MARCUM 787-412
B-284 ~ W. K. INGALLIS 831-611

BLDG. 66 VOL. 16 PG. 35 TO 42 (OVERLOOK BROOK COURT)
A-326 ~ M. J. SWANEY 787-630; 904-1279
B-328 ~ R.C. HUBB, JR. & P.S. LOWMEYER 899-10
C-322 ~ C.J. & M.S. GIOVIN 786-1262

BLDG. 42 VOL. 16 PG. 43 TO 46 (WOODSONG WAY)
A-192 ~ H.E. HENDERSON 897-138

BLDG. 57 VOL. 16 PG. 72 TO 76 (TWIN CREEKS)
A- ~ R. K. SWAN 794-955

BLDG. 50 VOL. 16 PG. 82 TO 92 (TWIN CREEKS)
A-240 ~ L. & R. CROUSE 797-765
B-242 ~ P. & E. CHAPPEL 808-37

BLDG. 56 VOL. 16 PG. 82 TO 92 (TWIN CREEKS)
A-265 ~ D. J. PIPER 863-1086
B-270 ~ E.A. LEONETTI 797-758
C-276 ~ D.L. FARROW 710-130
B-300 ~ C.R. ZANEM 816-1036

BLDG. 62 VOL. 16 PG. 8 TO 11 (OVERLOOK BROOK DRIVE)
A-278 ~ T. J. & P. A. KEAS 841-1229
B-300 ~ W. J. & R. M. KOVAL 774-635
C-302 ~ X. & C. WILSON 773-446

BLDG. 38 VOL. 16 PG. 19 TO 23 (N. PINTAIL)
A-180 ~ W. N. & J. M. SCHWARTZ 778-1232
B-182 ~ J. & S. GURTS 799-897

BLDG. 24 VOL. 16 PG. 29 TO 34 (SIGNAL HILL)
A-110 ~ R. J. SCHIER 801-1029
B-118 ~ R.A. GREEN 782-340
C-120 ~ J. SMITH 817-747

BLDG. 27 VOL. 20 PG. 155-117 (SIGNAL HILL)
A-136 ~

BLDG. 16 VOL. 15 PG. 119 - 127 (CLUB LANE)
A-80 ~ R.L. & R. MINTZ 755-792

BLDG. 36 VOL. 15 PG. 119 - 127 (N. PINTAIL)
A-170 ~ D. H. & L. W. MATHEWS 756-779
B-172 ~ E.V. GORDON 759-1122

BLDG. 37 VOL. 15 PG. 143 - 146 (NORTH PINTAIL)
A-174 ~ E. R. & C. L. BLANSON 874-311
B-176 ~ R.V. HOUSEL 852-336
C-178 ~ B.A. & G.E. BARTON 929-3

BLDG. 58 VOL. 15 PG. 149 - 153 (TWIN CREEKS)
A-278 ~ D. J. JONES 770-1
B-280 ~ S. H. & R. L. SILVER 774-1079

BLDG. 22 VOL. 15 - PG. 70 (SIGNAL HILL)
A-110 ~ M. & J. K. KENNEDY & M. A. MERRILL 749-74

BLDG. 30 VOL. 15 - PG. 70 (SOUTH PINTAIL)
A-100 ~ L. D. REID 920-908
B-104 ~ B.M. VENNETTI 895-987

BLDG. 31 VOL. 15 - PG. 83 (N. PINTAIL)
A-146 ~ L.M. & G.A. COURTNEY 888-525
B-148 ~ R.A. FRITZSCHE 750-777
C-150 ~ R.C. & T.J. JACKSON 890-680

BLDG. 23 VOL. 15 - PG. 91 (SIGNAL HILL)
A-112 ~ T. D. EVANS 749-865
B-114 ~ A.S. FOX, TRUSTEE 890-1226; 929-1110

BLDG. 32 VOL. 15 - PG. 91 (NORTH PINTAIL)
A-152 ~ D. C. I. R. G. SKINNER 731-859
B-154 ~ J. K. OLIVIER 751-554

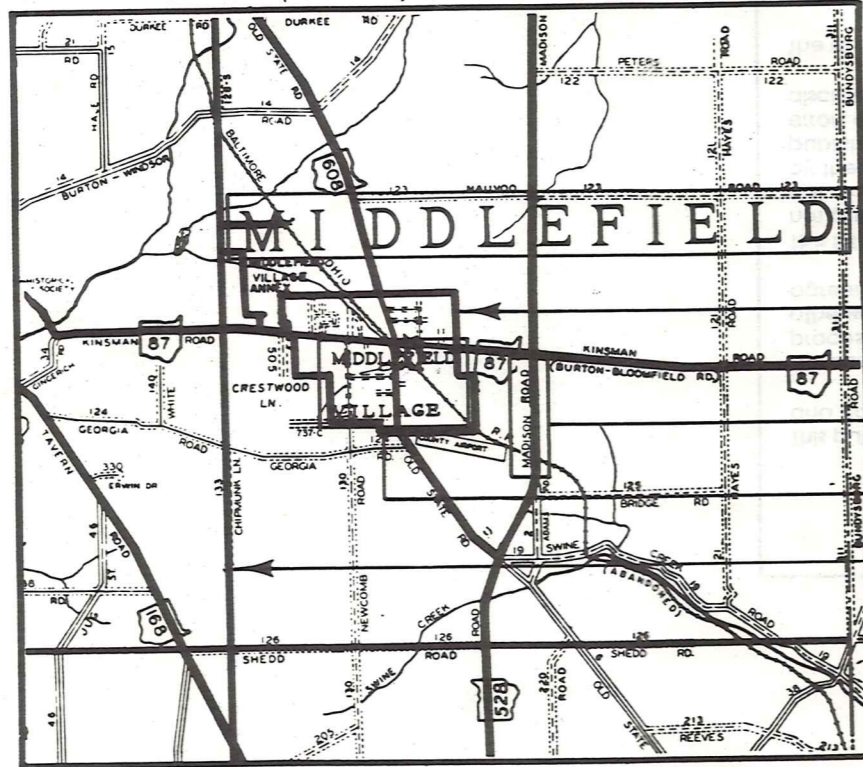
TRW-REDI SCALE IN 1/10 OF AN INCH

1-800-345-7334

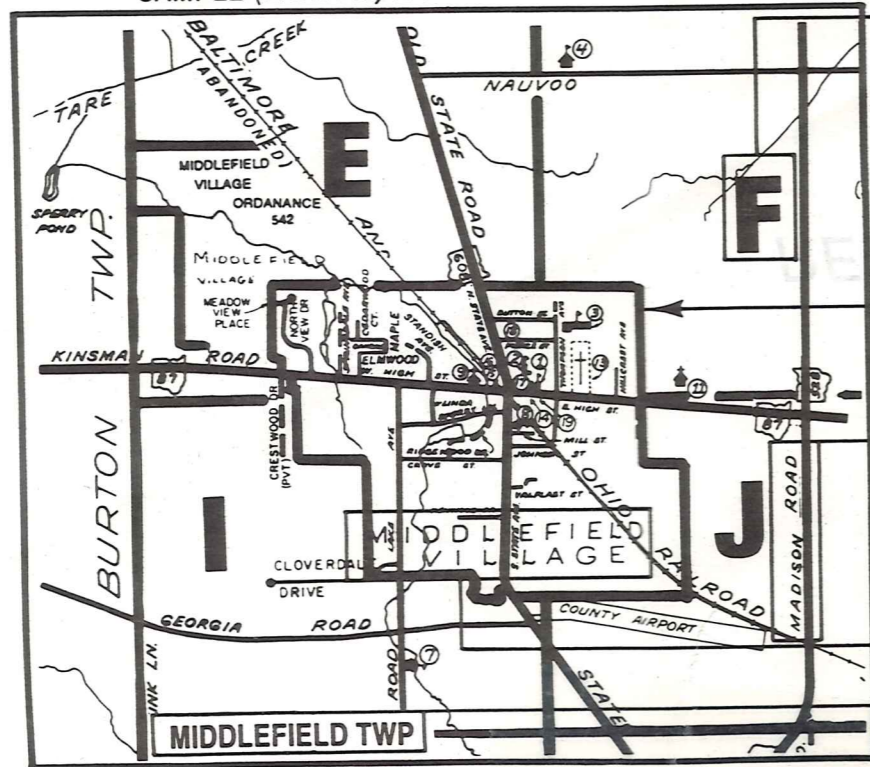
Explanation and Use Sheet for Geauga County, Ohio

A

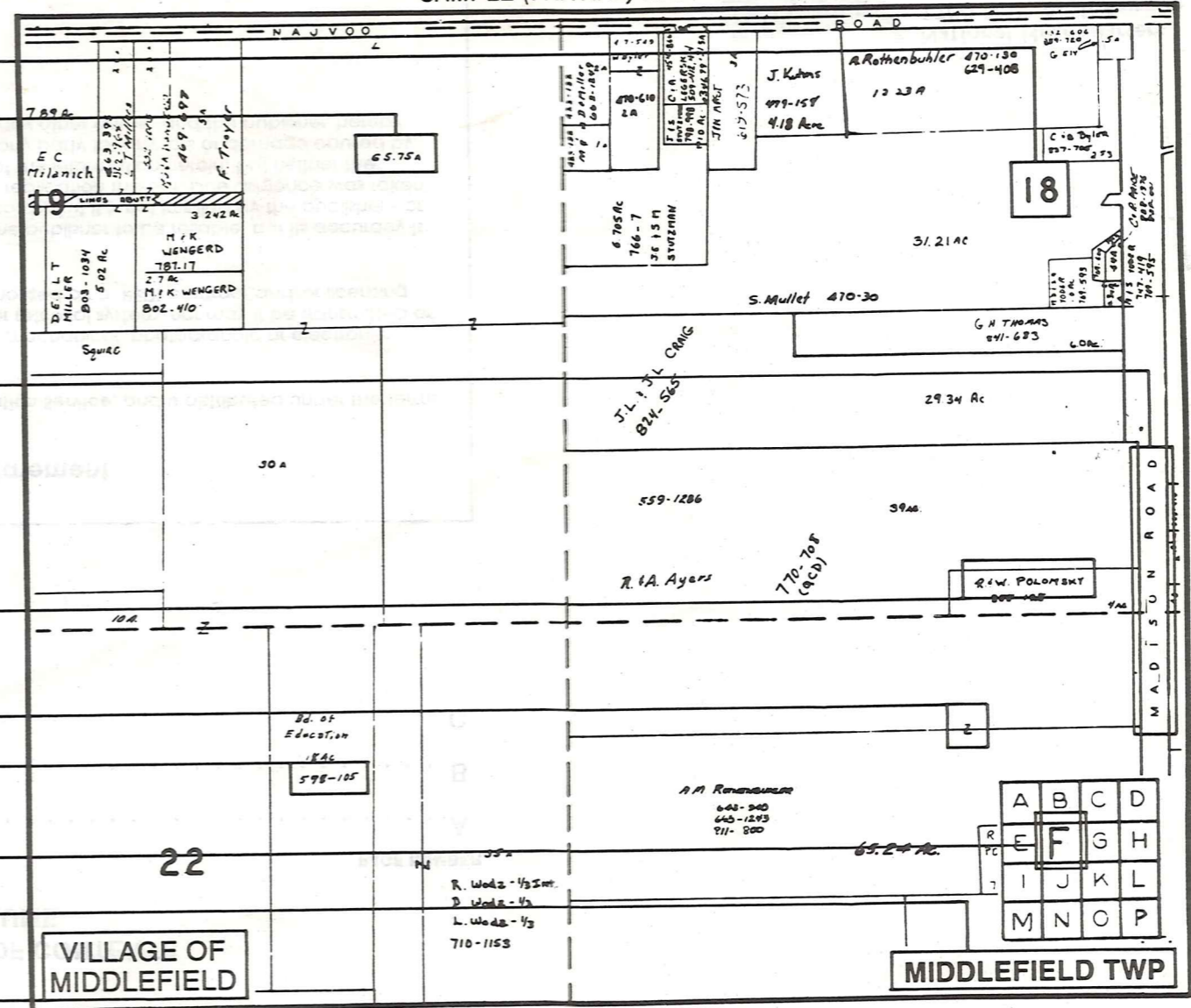
SAMPLE (PARTIAL) COUNTY INDEX MAP



SAMPLE (PARTIAL) MUNICIPALITY INDEX MAP



SAMPLE (PARTIAL) MAP PAGE



- Tract Lot Number
- Acreage
- Township Name
- Village Boundary
- Street Name
- Village Name
- Township Boundary
- Owners Name
- Denotes Continuous Ownership
- Deed Book & Page
- Map Page Number
- Township Name
- Village Name

- Village Boundary
- Street Name
- Village Name
- Township Name

USE OF THE MAP VOLUME

1. LOCATE THE GENERAL AREA OF INTEREST ON THE COUNTY INDEX MAP AND NOTE THE MUNICIPALITY NAME (TOWNSHIP OR VILLAGE).
 2. REFER TO THE TABLE OF CONTENTS AND NOTE THE BEGINNING ATLAS PAGE NUMBER FOR THE MUNICIPALITY OF INTEREST.
 3. TURN TO THE PAGE INDICATED, ON THIS PAGE WILL APPEAR AN INDEX MAP FOR THAT MUNICIPALITY.
 4. LOCATE THE GENERAL AREA OF INTEREST AND NOTE THE MAP PAGE NUMBER. THIS MAY BE EITHER A LETTER OR A NUMBER.
 5. MAP PAGES ARE IN ALPHABETICAL (OR NUMERICAL) SEQUENCE FOLLOWING THE MUNICIPALITY INDEX MAP. FOLLOW SEQUENCE TO THE MAP PAGE INDICATED.
 6. LOCATE SPECIFIC PARCEL OF INTEREST AND NOTE THE DESIRED INFORMATION.
- NOTE: ON SOME MAPS YOU MAY BE REFERRED TO A DETAIL SHEET SHOWING AN ENLARGEMENT OF THE AREA. THESE MAPS ARE FOUND AT THE END OF THE REGULAR MAP PAGES IN EACH MUNICIPALITY IN EITHER ALPHABETICAL OR NUMERICAL SEQUENCE.
- NOTE: CHARDON VILLAGE HAS TITLE SHEETS. TO LOCATE OWNERS NAME, NOTE THE PARCEL NUMBER, REFER TO THE TITLE PAGE FOLLOWING THE MAP OF INTEREST, FOLLOW NUMERICAL SEQUENCE TO THE PARCEL NUMBER OF INTEREST AND NOTE THE DESIRED INFORMATION. IN ALL OTHER MUNICIPALITIES THE OWNERS NAME APPEARS ON THE MAP PAGE.